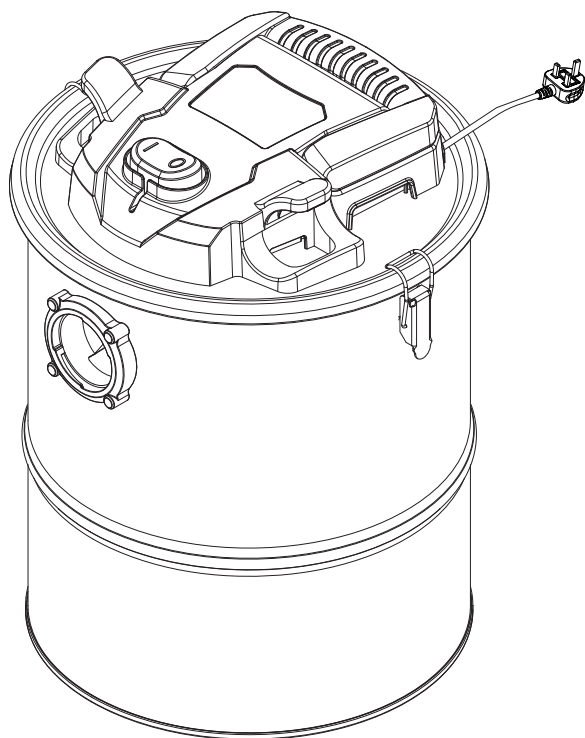


# SAV15

## 15L ASH VAC

OWNER'S MANUAL



FOR YOUR SAFETY  
PLEASE READ THESE INSTRUCTIONS CAREFULLY  
AND RETAIN THEM FOR FUTURE USE.

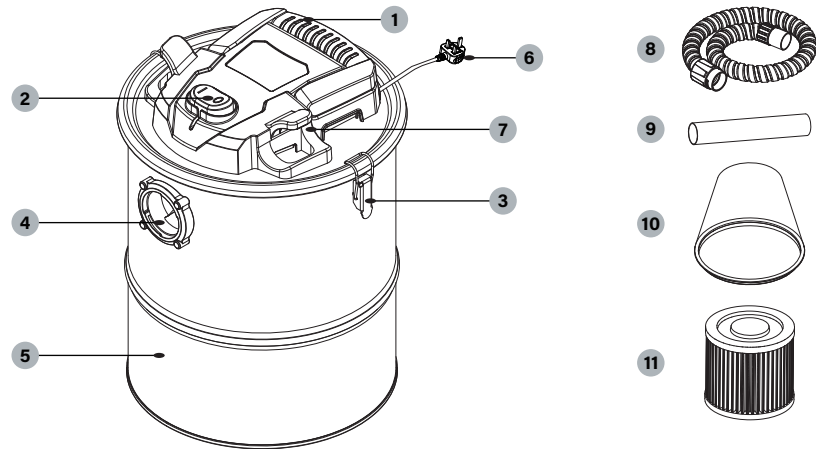


## PACKAGE CONTENTS

### DEFINITIONS: SAFETY ALERT SYMBOLS AND WORDS

This instruction manual uses the following safety alert symbols and words to alert people to hazardous situations and the risk of personal injury or property damage.

- ⚠ DANGER:** Indicates an imminently hazardous situation which, if not avoided, will result in death or serious injury.
- ⚠ WARNING:** Indicates a potentially hazardous situation which, if not avoided, could result in death or serious injury.
- ⚠ CAUTION:** Indicates a potentially hazardous situation which, if not avoided, may result in minor or moderate injury.
- NOTICE:** Indicates a practice not related to personal injury which, if not avoided, may result in property damage.



- |                       |                                     |
|-----------------------|-------------------------------------|
| 1 Handle              | 7 Hose holder                       |
| 2 On/off power switch | 8 Metal hose (25-1043)              |
| 3 Lid latches         | 9 Aluminum extension wand (25-1042) |
| 4 Vacuum port         | 10 Pre-filter (25-1040)             |
| 5 Dust tank           | 11 Cartridge filter (25-1041)       |
| 6 Power cord          |                                     |

**⚠ WARNING:** Read all safety warnings and all instructions. Failure to follow the warnings and instructions may result in electric shock, fire and/or serious injury.

**⚠ WARNING:** To reduce the risk of injury, read the instruction manual.

## GENERAL SAFETY PRECAUTIONS

### IMPORTANT SAFETY INSTRUCTIONS

**⚠ WARNING:** When using electrical appliances, always follow basic safety precautions to reduce the risk of fire, electric shock and personal injury, including the following:

**BEFORE USING THIS APPLIANCE, READ AND FOLLOW ALL INSTRUCTIONS.**

- ⚠ WARNING:** To reduce the risk of electric shock. Do not expose to rain. Store indoors.
- Do not leave the appliance when it is connected to a power source. Unplug it from outlet when not in use and before servicing.
- Do not allow the appliance to be used as a toy. Pay close attention when the appliance is used by or near children.
- Use this appliance **ONLY** as described in the manual. Use only SGS recommended attachments.
- Do not use this appliance with a damaged cord or plug. If the appliance is not working correctly, or if it has been dropped, damaged, left outdoors, or dropped in water, return it to a service center.
- Do not pull or carry this appliance by the cord, use the cord as a handle, close a door on the cord, or pull the cord around sharp edges or corners. Do not run the appliance over the cord. Keep cord away from heated surfaces.
- Do not unplug this appliance by pulling on the cord. To unplug, grasp the plug, not the cord.
- Do not handle the plug or appliance with wet hands.
- Do not put any objects into the openings of the appliance. Do not use the appliance with any opening blocked; keep free of dust, lint, hair and anything else that may reduce air flow.
- Keep hair, loose clothing, fingers, and all body parts away from the openings and moving parts.
- Turn off all controls before unplugging appliance.
- Take extra care when cleaning on stairs.
- Do not use the appliance to pick up flammable or combustible liquids, such as gasoline, or use in areas where flammable or combustible liquids are present.
- Static shocks are possible in dry areas or when the relative humidity of the air is low. This is only temporary and does not affect the use of the vacuum. To reduce the frequency of static shocks, add moisture to the air with a console, installed humidifier or use anti-static hose (standard on some models).
- To avoid spontaneous combustion, empty the dust tank after each use.

### SAVE THESE INSTRUCTIONS ADDITIONAL SAFETY RULES

**⚠ WARNING**

- Do not pick up anything that is burning or smoking, such as cigarettes, matches, or hot ashes.
- Do not use to vacuum combustible explosive materials, such as coal, grain, or other finely divided combustible materials.
- Do not use to vacuum hazardous, toxic or carcinogenic materials, such as asbestos or pesticide.
- Never pick up explosive liquids (e.g. gasoline, diesel fuel, heating oil, paint thinner, etc.), acids or solvents.
- Do not use vacuum without filters in place.
- Some wood contains preservatives which can be toxic. Take extra care to prevent inhalation and skin contact when working with these materials. Request and follow any safety information available from the material supplier.
- Do not use vacuum as a step ladder.
- Do not place heavy objects on vacuum.

**⚠ WARNING:** This product is NOT to be used for filtering of pathogens, for example COVID-19. Follow all local, state and federal guidance on general cleaning practices.

**⚠ WARNING:** Always wear proper personal hearing protection during use. Under some conditions and duration of use, noise from this product may contribute to hearing loss.

**⚠ WARNING:** Always use safety goggles. Everyday eyeglasses are NOT safety goggles. Also use face or dust mask if area of operation is dusty. ALWAYS WEAR CERTIFIED SAFETY EQUIPMENT.

To reduce the exposure to these chemicals, wear approved safety equipment such as dust masks that are specially designed to filter out microscopic particles.


**⚠ WARNING:** If the supply cord is damaged, it must be replaced by the manufacturer or its service agent or a similarly qualified person in order to avoid a hazard.

## GENERAL SAFETY PRECAUTIONS

**IMPORTANT:** Remove the plug from the socket before performing maintenance. Before using the machine make sure that the frequency and voltage shown on the rating plate correspond with the mains voltage. Specifications and details are subject to change without prior notice. The accessories shown in the pictures may vary from model to model.

### **⚠ WARNING**

#### **SERVICING OF DOUBLE-INSULATED WET/DRY VACUUM**

In a double-insulated Wet/Dry Vac, two systems of insulation are provided instead of grounding. No grounding means is provided on a double-insulated appliance, nor should a means for grounding be added. Servicing a double-insulated Wet/Dry Vac requires extreme care and knowledge of the system and should be done only by qualified service personnel. Replacement parts for a double-insulated Wet/Dry Vac must be identical to the parts they replace. This double-insulated Wet/Dry Vac is marked with the words "DOUBLE-INSULATED" and the symbol  (square within a square) may also be marked on the appliance.

To reduce the risk of injury from electrical shock, unplug power cord before servicing the electrical parts of the Wet/Dry Vac.

#### **IMPORTANT !**

If the supply cord is damaged, it must be replaced by the manufacturer or its service agent or a similarly qualified person in order to avoid a hazard.

#### **IMPORTANT !**

Remove the plug from the socket before performing maintenance. Before using the machine make sure that the frequency and voltage shown on the rating plate correspond with the mains voltage. Specifications and details are subject to change without prior notice. The accessories shown in the pictures may vary from model to model.



**⚠ WARNING: IF THE CORD IS DAMAGED, IT MUST BE REPLACED BY A SPECIAL CORD OR SERVICE AGENT.**

#### **IMPORTANT SAFEGUARDS**

The symbol on the product or packaging indicates that the product must not be treated as domestic refuse. Instead, it should be handed in to a collection point for the recycling of electrical and electronic components. By ensuring the product is treated in the correct manner, you will help prevent any negative impact on the environment and health that might arise were the product to be discarded as ordinary refuse. For further information about recycling, you should contact your local authorities, refuse collection service or the sales outlet where you bought the goods.



### **⚠ WARNING**

• TO REDUCE THE RISK OF INJURY, USERS MUST READ INSTRUCTION MANUAL. DO NOT RUN UNATTENDED. DO NOT PICK UP FLAMMABLE, COMBUSTIBLE OR HOT MATERIALS. DO NOT USE AROUND EXPLOSIVE DUST, LIQUIDS OR VAPORS. ELECTRICAL DEVICES PRODUCE ARCS OR SPARKS WHICH CAN CAUSE FIRE OR EXPLOSION. DO NOT USE AT FILLING STATIONS OR ANYWHERE GASOLINE IS STORED OR DISPENSED. DO NOT VACUUM TOXIC OR CARCINOGENIC MATERIALS OR OTHER HEALTH ENDANGERING MATERIALS SUCH AS ASBESTOS OR PESTICIDES. ALWAYS USE PROPER EYE AND RESPIRATORY PROTECTION. TO REDUCE THE RISK OF ELECTRICAL SHOCK, DO NOT EXPOSE TO RAIN. STORE INDOORS. WHEN SERVICING, USE ONLY IDENTICAL REPLACEMENT PARTS. DO NOT TO BE USED AS A STEP STOOL.

## PRODUCT SPECIFICATIONS & OPERATING INSTRUCTIONS

### PRODUCT SPECIFICATIONS

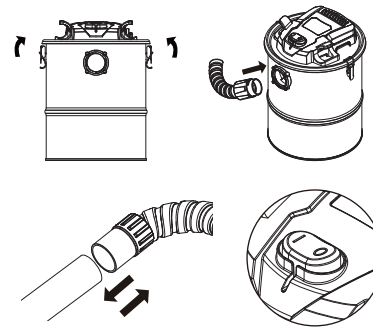
Model	SAV15
Tank capacity	15L
Power	220-240V~ / 50-60Hz / 600W
Motor	Single Stage
Hose	32mm x 1.2m
Power cord	2C×0.75mm <sup>2</sup> ×3.05m

### SAVE THESE INSTRUCTIONS

#### OPERATING INSTRUCTIONS

##### UNPACKING & SETUP SUMMARY

1. Pull lid latches in an outward motion, remove power head and some accessories that may have been shipped in the tank.
2. Before replacing power head, refer to this manual to ensure have the proper filter installed for the cleaning operation.
3. Replace power head, and apply pressure with thumb to each latch until it snaps tightly in place. Make sure all lid latches are clamped securely.
4. Insert the hose end into inlet of tank.
5. Attach the extension wands to the end of the hose. Apply slight pressure until fitting is tight.
6. Attach one of the cleaning accessories (depending on the cleaning requirements) to the extension wands. Twist slightly to tighten the connection.
7. Plug the cord into the wall outlet. The vacuum is ready for use.



**⚠ WARNING:** To reduce the risk of injury from accidental starting, always shut off vacuum and disconnect the power plug from the wall outlet before installing any part or cleaning accessory.

**⚠ WARNING:** Do not alter the plug in any way. If the plug does not fit fully in the outlet, reverse the plug. If it still does not fit, contact a qualified electrician to install the proper outlet.

**⚠ WARNING:** To reduce the risk of fire or explosion, do not operate this vacuum in areas with flammable gases, vapors or explosive dust in the air. Flammable gases or vapors include but are not limited to: lighter fluid, solvent-type cleaners, oil-based paints, gasoline, alcohol or aerosol sprays. Explosive dusts include but are not limited to: coal, magnesium, aluminum, and grain or gun powder. Do not vacuum explosive dust, flammable or combustible liquids or hot ashes. Do not use this vacuum as a sprayer for any flammable or combustible liquid. To reduce the risk of health hazards from vapors or dusts, do not vacuum toxic materials.

**⚠ CAUTION:** To reduce risk of hearing damage, wear ear protectors when using the vacuum for extended hours or when using it in a noisy area.

#### DRY PICK-UP

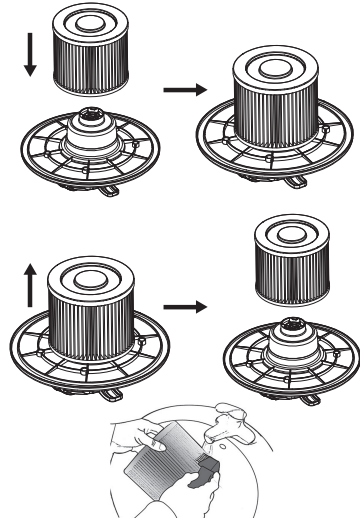
1. The filter must always be in correct position to reduce the risk of leaks and possible damage to vac. Make sure that the filter is completely covering the filter cage. Make sure there are no gaps between the filter and the lid. It is very important to assemble the filter to the cage without any possible leaks or tears. Any leaks will allow the picked up debris to be blown out of the blowing port and back into the surrounding environment.
2. When using the vac to pick up very fine dust, it will be necessary to empty the dust tank and clean or replace the filter at more frequent intervals to maintain peak vac performance.

#### INSTALLING THE CARTRIDGE FILTER

1. With the power head in an upside down position, slide the cartridge filter down over the lid cage, push the filter seals against the power head.

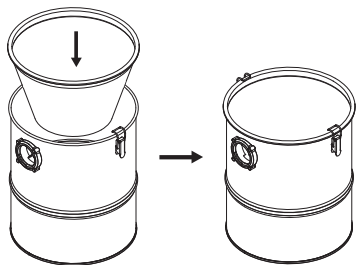
## OPERATING INSTRUCTIONS

- To remove the filter, pull the filter from the power head.
- To clean the cartridge filter, shake or brush off excess dirt or rinse (from the inside of the filter) with water, dry completely (approximately 24 hours) and re-install.



### INSTALLING THE PRE- FILTER

Put the pre-filter in the dust tank, make sure the pre-filter is completely covering the opening edge of dust tank, make sure there are no gaps between the pre-filter and the dust tank.



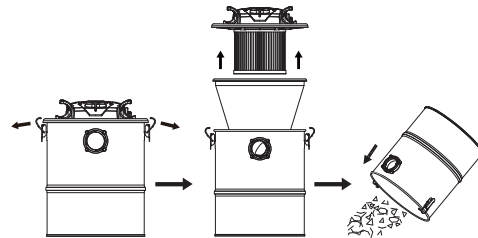
### NOTICE:

A dry filter is necessary to pick up dry materials. If use the vac to pick up dust when the filter is wet, the filter will clog quickly and be very difficult to clean. If the filter gets wet, replace it before continuing to do dry pickups.

### EMPTYING THE TANK

**⚠ WARNING:** To reduce the risk of injury from accidental starting, unplug power cord before emptying the dust tank.

- Remove the power head assembly of the wet/dry vac by pulling outward on the lid clips located on each side of the vac. Lift off the power head assembly.
- Dump the tank contents into the proper waste disposal container.



### CARE AND MAINTENANCE

**⚠ WARNING:** To reduce the risk of injury from accidental starting, unplug power cord before changing or cleaning filter. The filter should be cleaned often to maintain peak vac performance.

**⚠ IMPORTANT:** After cleaning, check the filter for tears or small holes. Do not use a filter with holes or tears in it. Even a small hole can cause a lot of dust to come out of the vac. Replace it immediately.

### NOTICE:

Clean the filter in an open area. Cleaning should be done outdoors and not in living quarters.

## OPERATING INSTRUCTIONS

### CLEANING:

To keep the ash vac looking its best, clean the outside with a cloth dampened with warm water and mild soap.

To clean the tank:

- Dump out debris.
- Wash tank thoroughly with warm water and mild soap.
- Wipe out with dry cloth.

### STORAGE

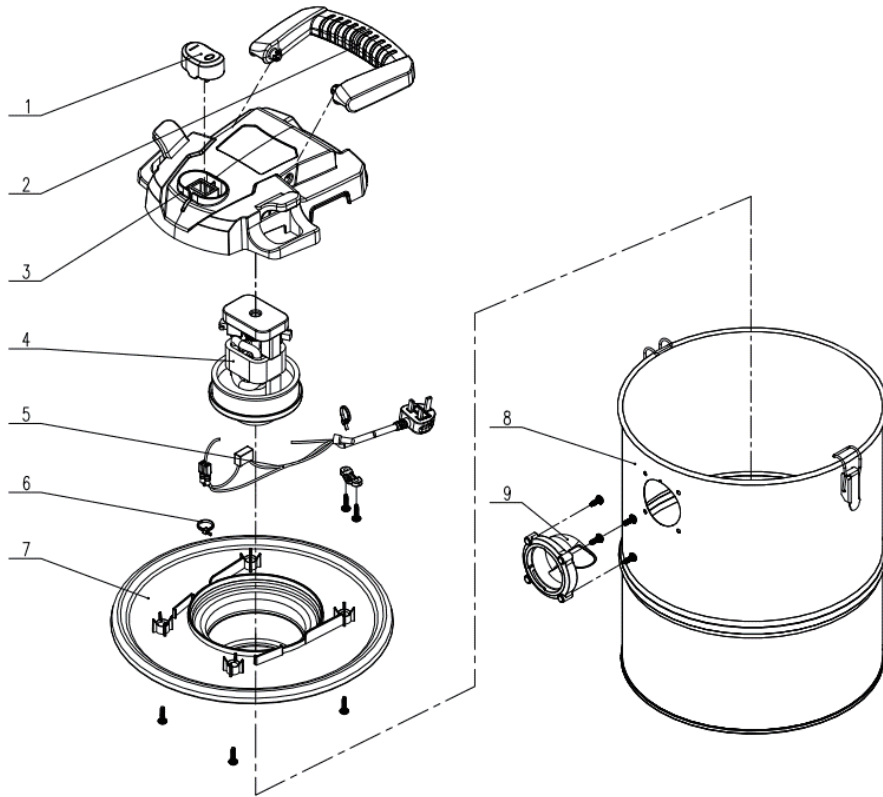
Before storing the vac, the dust tank should be emptied and cleaned. The vac should be stored indoors.

### TROUBLESHOOTING

Minor problems often can be fixed without calling customer service.

PROBLEM	POSSIBLE CAUSE	CORRECTIVE ACTION
Vacuum does not run	No electricity	Make sure electrical outlet has voltage (A qualified electrician may need to be contacted)
Loss of suction, wet pick-up	1. Full tank 2. Clogged hose 3. Clogged filter	1. Drain and clean tank 2. Remove hose and clean debris 3. Clean or replace filter
Loss of suction, dry pick-up	1. Full tank 2. Clogged hose 3. Clogged filter	1. Drain and clean tank 2. Remove hose and clean debris 3. Clean or replace filter

## EXPLODED VIEW



## PARTS LIST

ITEM	DESCRIPTION	QTY
1	On/off Switch	1
2	Handle	1
3	Top Cover	1
4	Motor	1
5	Power Cord	1
6	Ties	2
7	Lid	1
8	Dust Tank	1
9	Hose Inlet	1

**SGS Engineering (UK) Ltd  
2 Years Limited Warranty**

This warranty covers any defects in materials or workmanship of the enclosed product. SGS Engineering (UK) Ltd will replace any defective materials due to the craftsmanship of the product. This warranty does not cover any problem caused by misuse, abuse, accidents, or acts of God, such as floods or hurricanes. Consequential and incidental damages are not covered under this warranty. Coverage terminates if you sell or otherwise transfer the ownership. If you feel you have a defective product, please return it to the store where you acquired it along with a copy of your receipt.

Address: Unit 1, West Side Park, Belmore Way,  
Derby, DE21 7AZ, United Kingdom.

Telephone: 01332576850;

Support email: [support@sgs-engineering.com](mailto:support@sgs-engineering.com)

We will inspect the product and contact you within 72 business hours to give you the results of our inspection, we reserve the right to replace the product at our discretion. However; we may replace the product with one of the similar but not exact features.

This warranty gives you specific legal rights. You may have other rights that vary from country to country.



SGS Engineering (UK) Ltd  
West Side Park  
Raynesway  
Derby, DE21 7AZ

## EC Declaration of Conformity

**This is an important document and should be retained**

MANUFACTURER'S NAME: SGS Engineering (UK) Ltd  
TYPE OF EQUIPMENT: 15L ASH VACUUM  
PART NUMBER: AT19184-4/SAV15  
RATINGS & PRINCIPLE: 220-240V, 50-60Hz, 600W, Class II

RELEVANT STANDARDS:

EN 60335-2-2:2010 + A11:2012 + A1: 2013  
EN 60335-1:2012 + A11:2014 + AC:2014 + A13:2017 + A1:2019 + A14:2019 +  
A2:2019 + A15:2021  
EN 62233:2008  
the Low Voltage Directive 2014/35/EU  
Electrical Equipment (Safety) Regulations 2016

I, the undersigned, hereby declare that the equipment specified above conforms to the above European Communities Directive(s) and Standard(s).

PLACE: Derby, UK

DATE: 1st JUL 2024

A handwritten signature in black ink, appearing to read 'Neil Sansom', written over a horizontal line.

(Signature)

Neil Sansom,  
Company Chief Executive Officer